

# iP-WM100 Wall Mount Installation Instructions

## Description

The contents of the iP-WM100 Wall Mount Kit allow you to mount an iP-Series loudspeaker from the wall. Only one iP-Series loudspeaker may be mounted per iP-WM100 Wall Mount Kit.

### iP-WM100 Wall Mount Kit (Part No. 2045571) contents:

Part No.	Quantity	Description
2045571	1	iP Series Wall Mount Kit
2045709	1	Instruction Sheet

### Required Tools (not included):

Hand wrench or socket wrench  
Drill and drill bit  
Four (4) lag bolts or inflation screws  
5mm Hex Key

## Safety First!

Before installing and using this product, please read these instructions carefully and keep them on hand for future reference. Failure to follow the precautions may result in damage, injury, or even death.

**! WARNING:** When installing this product, always respect the safety standard. Do not install the product in any way that is not described in these instructions.

**! WARNING:** The iP-WM100 Wall Mount has been tested to a Working Load Limit (WLL) of 47 lb / 21 kg with a 5:1 safety factor. Never apply a load that exceeds the Working Load Limit.

Before mounting the speaker, make all of the necessary calculations to ensure that all of the components are used within their nominal work load range. Remember that the weakest component determines the safety level of the entire installation.

Be sure to select the appropriate lag bolts or inflation screws for the type of wall to which the iP-WM100 and iP-Series loudspeaker will be mounted.

LOUD Technologies Inc. • 16220 Wood-Red Road NE  
Woodinville • WA • 98072 • 800/258-6883  
Outside the U.S. call 425/487-4333 • FAX 425/487-4337

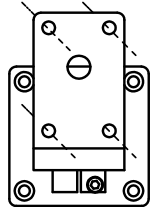
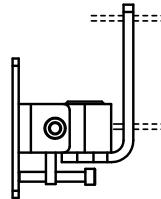
Disclaimer:  
LOUD Technologies Inc. continually engages in research related to product improvement. New material, production methods, and design refinements are introduced into existing products without notice as a routine expression of that philosophy. For this reason, any current LOUD Technologies Inc. product may differ in some respect from its published description, but will always equal or exceed the original design specifications unless otherwise stated.

Part No. SW1104 Rev A 02/15  
© 2015 LOUD Technologies Inc. All Rights Reserved.

## Wall Mount Installation

Only one iP-Series loudspeaker may be mounted per iP-WM100 Wall Mount Kit. Follow the steps below once you have found a suitable position for the speaker.

1. With the bracket held in place, use a pencil to mark the four holes of the rectangular (side) plate. Once marked, put the bracket down.

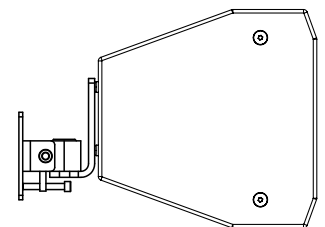
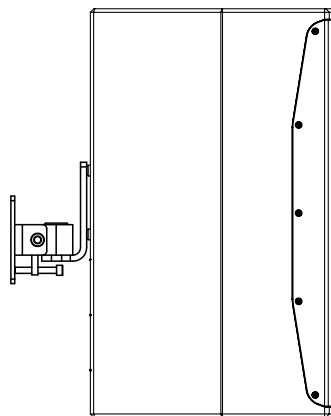


2. Using a drill bit that is smaller in diameter than the lag bolt or inflation screw, drill each of the four marked holes.

3. Put the bracket back in place where you just drilled the holes. Fully screw each of the four lag bolts or inflation screws through the wall mount bracket into the wall until they are firmly against the bracket.

4. Place the iP-Series loudspeaker on to the vertical arm of the wall mount bracket, lining up the four holes.

**NOTE:** The loudspeaker may be attached horizontally or vertically.



5. Fully screw each of the four screws through the wall mount bracket into the iP-Series loudspeaker until they are firmly against the bracket. Be sure the loudspeaker is secure before releasing it.

**VERY IMPORTANT:** Test the installation with the loudspeaker in different positions to ensure that the bracket stays firmly secured to the wall.