



## Bluetooth Setup With Windows 7, Vista, and XP

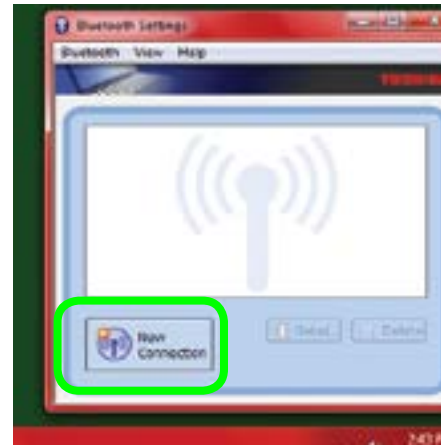
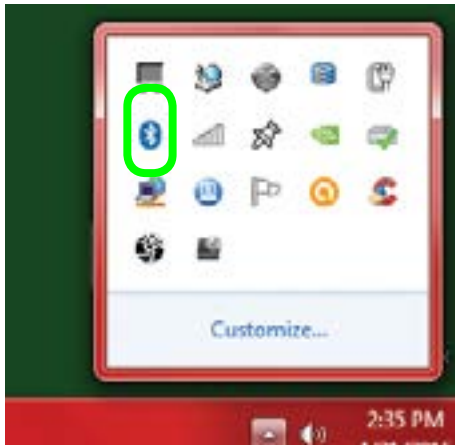
Note: Not All Windows computers come equipped with Bluetooth. Check with your computer's manufacturer to determine if it is Bluetooth compatible.

If your computer does not have a Bluetooth connection, acquire a Bluetooth USB adapter.

Systems that come with Bluetooth or Bluetooth USB adapters often have software that must be installed to use the adapter with a Windows system.

### Bluetooth Setup

There are a couple of different ways to set up your computer's Bluetooth. The first way is to open your Bluetooth Settings Manager from Windows Tray by double-clicking the Bluetooth Icon. Then click the "New Selection" button to open the Add New Connection Wizard.



OR, you can go to **Start > Control Panel > Hardware and Sound > Devices and Printers**.

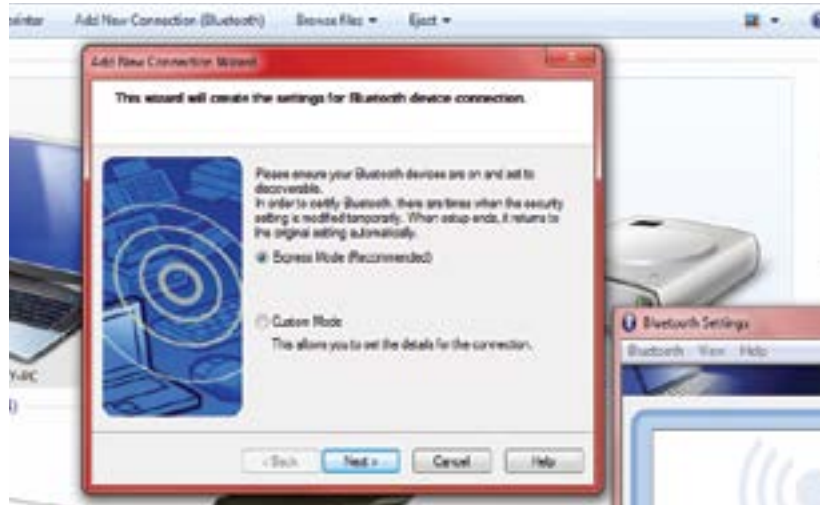
Under "Devices", select your computer, then click "Add New Connection (Bluetooth)" to open the Add New Connection Wizard.





## Bluetooth Setup With Windows 7, Vista, and XP

Follow the prompts on the Add New Connection Wizard.



### Pair With Bluetooth

At the same time that the Add New Connection Wizard is searching for Bluetooth devices, press and hold the FreePlay's BT / AUX button. The button LED will illuminate and flash white while in pairing mode.





## Bluetooth Setup With Windows 7, Vista, and XP

The FreePlay will appear as an available device. The Wizard should then indicate that it is successfully connected. If it does not, start the pairing process again, and make sure the FreePlay and your computer are both in pairing mode at the same time.



You may need to make the FreePlay your default audio device. To do this, go to:  
**Start > Control Panel > Hardware and Sound > Sound**  
And select the Bluetooth Audio Device (FreePlay) as your default Playback device.

