


**Thrash212**
**Thrash215**

## THRASH

### 1300W Powered Loudspeaker Series

Mackie Thrash loudspeakers are all about no frills, raw power, and reliability without sacrificing sound quality.

Built on a legacy of legendary loudspeaker design, Thrash is voiced for modern musicians, loud vocals, screaming guitars, and face-melting keytar solos.

With a wall-shaking 1300W of power, Thrash has what it takes to keep up with every gig, rehearsal, you name it.

Flexible I/O includes two inputs plus a Mix Out for chaining speakers or hooking up a powered subwoofer.

Thrash is the ultimate start to building your own gig-worthy PA system, so throw it in the van and let's do this.

### APPLICATIONS:

Singer-songwriters, announcement PA, karaoke, clubs / cafés, houses of worship, schools, small restaurants, outdoor events / barbeques, banquet halls, conference rooms, boardrooms, and many, many more.

### FEATURES:

- 1300W ultra-efficient Class-D amplifier
- Built-Like-A-Tank™ to conquer every gig while lightweight for easy loading
- Frequency response: 52 Hz – 20 kHz (-10 dB) [Thrash212]
- Frequency response: 38 Hz – 20 kHz (-10 dB) [Thrash215]
- Max SPL: 125 dB [Thrash212]
- Max SPL: 126 dB [Thrash215]
- Flexible I/O
  - Inputs 1 and 2 feature XLR/TRS combo inputs
  - Inputs accept both line and mic level
  - Mix output contains audio from both input channels
- 12" high-performance woofer [Thrash212]
- 15" high-performance woofer [Thrash215]
- 1" Titanium compression driver
- Standard pole mount
- Equipped with 4 handles for easy loading
- Dual-angle monitor wedge for use as a floor monitor
- Rotatable grille badge

## THRASH SPECIFICATIONS

### Acoustic Performance

|                             |                            |
|-----------------------------|----------------------------|
| Frequency Response (-10 dB) | 52 Hz - 20 kHz [Thrash212] |
|                             | 38 Hz - 20 kHz [Thrash215] |
| Frequency Response (-3 dB)  | 65 Hz - 20 kHz [Thrash212] |
|                             | 55 Hz - 20 kHz [Thrash215] |
| Horizontal Coverage         | 90°                        |
| Vertical Coverage           | 60°                        |
| Maximum SPL Peak            | 125 dB [Thrash212]         |
|                             | 126 dB [Thrash215]         |
| Monitor Angle               | 45°                        |

### Transducers

|                |   |
|----------------|---|
| Low Frequency  | 12 in / 305 mm [Thrash212]                    |
|                | 15 in / 381 mm [Thrash215]                    |
|                | with ferrite                                  |
| High Frequency | 1.0 in / 25 mm titanium high frequency driver |

### Power Amplifiers

|                                |                    |
|--------------------------------|--------------------|
| System Power Amplification     |                    |
| Rated Power                    | 1300 watts peak    |
| Low Frequency Power Amplifier  |                    |
| Rated Power                    | 1000 watts peak    |
| Rated THD                      | <1%                |
| Cooling Design                 | Convection Class D |
| High Frequency Power Amplifier |                    |
| Rated Power                    | 300 watts peak     |
| Rated THD                      | <1%                |
| Cooling Design                 | Convection Class D |

### Input / Output

|                   |  |
|-------------------|--|
| Input Type        | 2x Female XLR - 1/4" Balanced TRS combo jack |
| Mic Impedance     | 20 kΩ Balanced                               |
| Line Impedance    | 1 MΩ Unbalanced Hi-Z                         |
| Mix Out           | Male XLR Balanced                            |
| Mix Out Impedance | 600 Ω Balanced                               |

### Electronic Crossover

|                     |                |
|---------------------|----------------|
| Crossover Type      | 24 dB / octave |
| Crossover Frequency | 2.4 kHz        |

### Line Input Power

|                      |                                |
|----------------------|--------------------------------|
| Detachable line cord | 100V - 120V~, 50 - 60 Hz, 75 W |
|                      | 220V - 240V~, 50 - 60 Hz, 75 W |
| AC Connector         | 3-Pin IEC 250 VAC, 10 A male   |
| Power Supply Type    | Switchmode                     |

### Safety Features

|                  |  |
|------------------|--|
| Input Protection | Peak and RMS limiting, power supply and amplifier thermal protection |
| Display LED      | Rear panel power / overload  |

### Mounting Methods:

Floor mount, pole mount via the built-in socket on the bottom of the cabinet [Be sure the pole is capable of supporting the weight of the loudspeaker]. There are no rigging points and they are NOT suitable for rigging. Do not suspend a Thrash loudspeaker by its handles.

### Physical Properties (product)

|                   |                   |
|-------------------|-------------------|
| <b>THRASH212:</b> |                   |
| Height:           | 26.4 in / 669 mm  |
| Width:            | 14.8 in / 375 mm  |
| Depth:            | 12.3 in / 313 mm  |
| Weight:           | 36.4 lb / 16.5 kg |
| <b>THRASH215:</b> |                   |
| Height:           | 28.0 in / 711 mm  |
| Width:            | 17.1 in / 434 mm  |
| Depth:            | 14.3 in / 363 mm  |
| Weight:           | 40.8 lb / 18.5 kg |

## THRASH SPECIFICATIONS CONTINUED...

### Physical Properties (packaged product)

**THRASH212:**

|         |                   |
|---------|-------------------|
| Height: | 30.4 in / 772 mm  |
| Width:  | 17.6 in / 447 mm  |
| Depth:  | 15.4 in / 391 mm  |
| Weight: | 40.8 lb / 18.5 kg |

**THRASH215:**

|         |                   |
|---------|-------------------|
| Height: | 31.9 in / 810 mm  |
| Width:  | 20.0 in / 508 mm  |
| Depth:  | 17.2 in / 437 mm  |
| Weight: | 45.2 lb / 20.5 kg |

### Options

|                               |             |
|-------------------------------|-------------|
| T100 Loudspeaker Tripod Stand | P/N 2052464 |
| SPM200 Loudspeaker Pole Mount | P/N 2035170 |

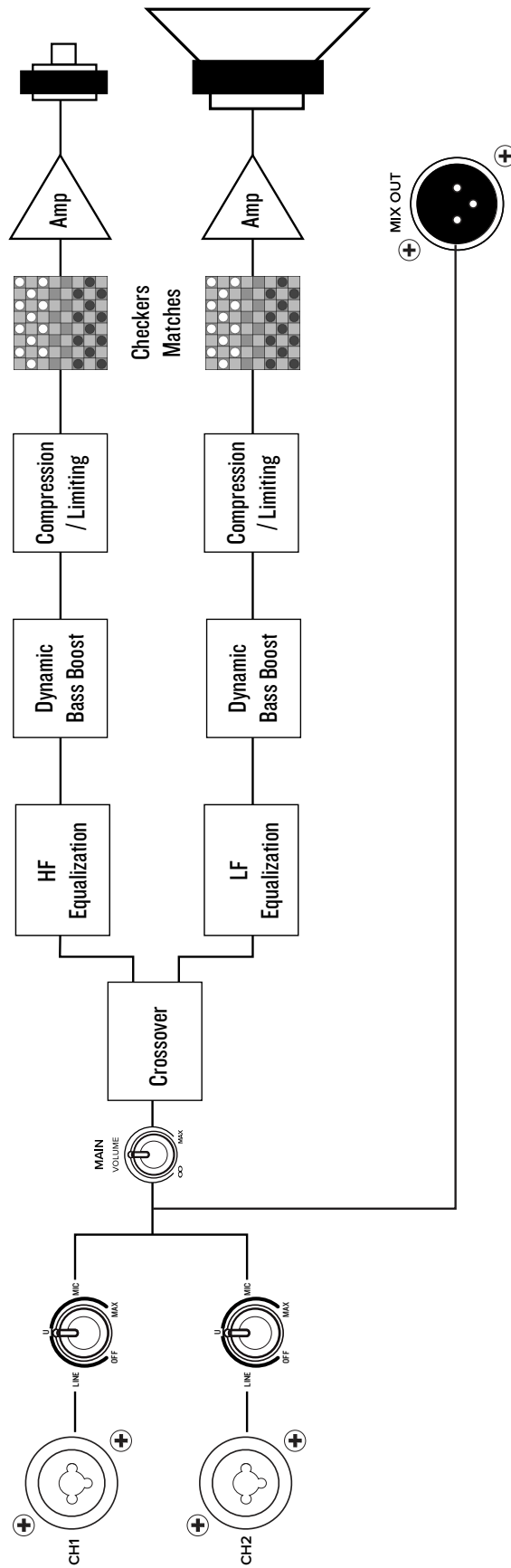
### Ordering Information

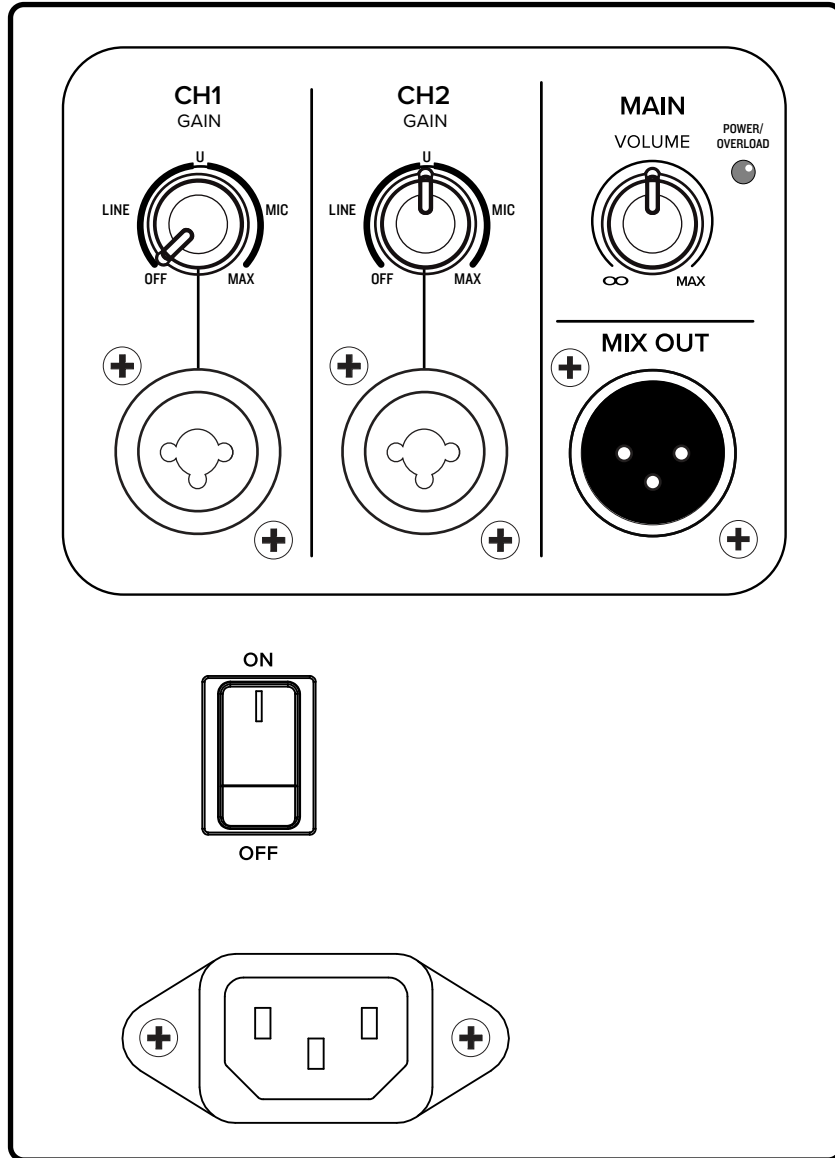
**THRASH212 – 12" 1300W Powered Loudspeaker**

|                           |
|---------------------------|
| P/N 2054320-00 (US)       |
| P/N 2054320-01 (EU)       |
| P/N 2054320-03 (UK)       |
| P/N 2054320-04 (AU)       |
| P/N 2054320-05 (CN)       |
| P/N 2054320-06 (BZ ~120V) |
| P/N 2054320-16 (BZ ~230V) |
| P/N 2054320-07 (AR)       |
| P/N 2054320-08 (KR)       |

**THRASH215 – 15" 1300W Powered Loudspeaker**

|                           |
|---------------------------|
| P/N 2054321-00 (US)       |
| P/N 2054321-01 (EU)       |
| P/N 2054321-03 (UK)       |
| P/N 2054321-04 (AU)       |
| P/N 2054321-05 (CN)       |
| P/N 2054321-06 (BZ ~120V) |
| P/N 2054321-16 (BZ ~230V) |
| P/N 2054321-07 (AR)       |
| P/N 2054321-08 (KR)       |

**THRASH BLOCK DIAGRAM**


**THRASH LOUDSPEAKER REAR PANEL**


Electronic files for this product are available at:  
[www.mackie.com](http://www.mackie.com)

Specification Sheet

THRASH\_SS.PDF

Owner's Manual

THRASH\_OM.PDF

LOUD Audio, LLC. is always striving to improve our products by incorporating new and improved materials, components, and manufacturing methods. Therefore, we reserve the right to change these specifications at any time without notice.

"Mackie" and the "Running Man" figure are registered trademarks of LOUD Audio, LLC. All other brands mentioned are trademarks or registered trademarks of their respective holders, and are hereby acknowledged.